

GENERAL PRODUCT INFORMATION

BASIC DATA

Product code	1050
Shape	Round
Lid type	Standard
Weight	10.0 g.

DIMENSIONS

Size	Ø 133
D1	133.2 mm.
D2	127.1 mm.
H1	8.6 mm.
H2	9.6 mm.

MATERIAL

Raw material	Polypropylene
Temperature	Temperature on request
Colour	Colour on request

CLOSURE

Closure system	Tamper evident closure
	Snap-on
	Protective collar

IML DECORATION

IML	Yes
Offset print	Yes
D3	120.0 mm.

Note: Please enquire about specific print-layouts

TUB OPTIONS

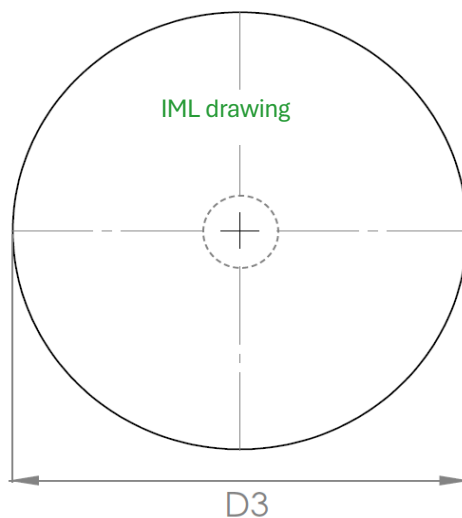
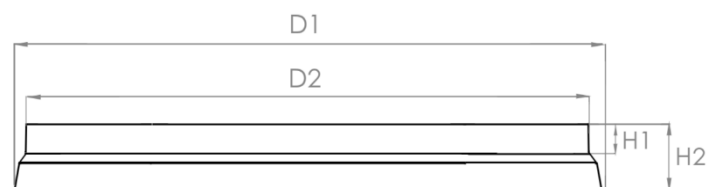
2052	2059
2054	2156
2056	2159
2058	

Note: Please find the datasheets on our website: www.toppac.dk

TOLERANCES

Weight	± 10% ± 1.0 g.
Dimensions	± 1%

LID ROUND 1050



STANDARD PACKAGING

Lids/box	Units/pallet	Qty./pallet
1.248	12	14.976

PACKAGING SIZE

Unit	Size
Box	590 x 400 x 360 mm.
Pallet	1200 x 800 x 1230 mm.