

GENERAL PRODUCT INFORMATION

BASIC DATA

Product code	1040
Shape	Round
Lid type	Standard
Weight	8.0 g.

DIMENSIONS

Size	Ø 122
D1	120.3 mm.
D2	117.4 mm.
H1	7.3 mm.
H2	7.8 mm.

MATERIAL

Raw material	Polypropylene
Temperature	Temperature on request
Colour	Colour on request

CLOSURE

Closure system	Tamper evident closure
	Snap-on
	Protective collar

IML DECORATION

IML	Yes
Offset print	Yes
D3	111.0 mm.

Note: Please enquire about specific print-layouts

TUB OPTIONS

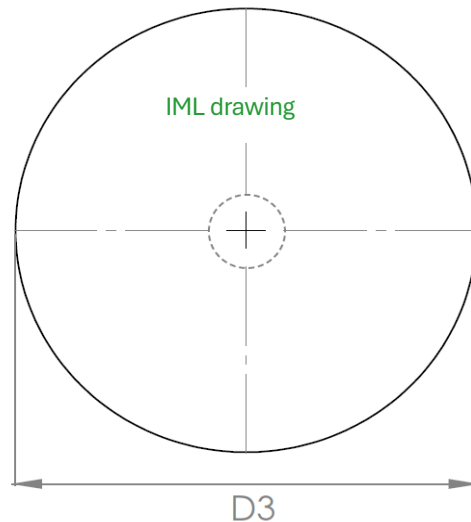
2040	2048
2042	2146
2044	2148
2046	

Note: Please find the datasheets on our website: www.toppac.dk

TOLERANCES

Weight	± 10% ± 0.8 g.
Dimensions	± 1%

LID ROUND 1040



STANDARD PACKAGING

Lids/box	Boxes/pallet	Lids/pallet
1.414	12	16.968

PACKAGING SIZE

Unit	Size
Box	590 x 400 x 360 mm.
Pallet	1200 x 800 x 1230 mm.