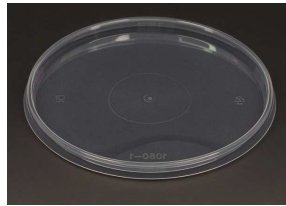


**Product dimension** Ø 133 mm**Volume** Lid**Product** Lid **1050**Shape **Round****Product** Cup 2052, 2056, 2058, 2059  
2156, 2159

<b>Weight</b>	10,0 gram	± 2 %	Closure system	Tamper Evident Tab Snap-on Protective collar
---------------	-----------	-------	----------------	----------------------------------------------------

**Dimension, External**

<b>Packaging (W x L x H)</b>	Unit	Pcs.	Units per pallet	Pcs. /pallet	Unit size mm	Pallet height mm
	Box	1.248	12	14.976	590 x 400 x 360	1200 x 800 x 1230

**Decoration possible** IML Toppac standard colours.

**Safety and performance** The needed strength in the product is different and there are several different factors to consider in each situation. Toppac strongly recommends customers to make their own trials and tests to ensure strength during packing, stacking, shipping and the durability of the product itself.

**Raw material** PP Polypropylene.

**Temperature**

**Hot filling** The material chosen has a very good resistance and the packaging is suitable for hot filling. Product temperature 85-95°C. It is the responsibility of the customer to test actual product in real temperature before approval for use.

**Cold products** Random PP resists to 5°C. Block PP resists temperature to - 20°C. It is the responsibility of the customer to test actual product in real temperature before approval for use.

**Quality**

**Deviations** Within the industry, deviations in the product specification according to this datasheet of 0.025% (25 pcs. per 100.000 pcs.) are considered acceptable. Within this margin it is not seen as a defect. We also refer you to our Standard Terms and Conditions.

**Shelf life** The compliance of the product to the technical specifications in this data sheet is guaranteed for 12 months from date of delivery. After this period we cannot be held responsible for use of the product. Suitable storage conditions are protection from direct sunlight, rain, very low temperatures or very high temperatures over a long period.

**Approvals** All Toppac products comply with the European Union Commission Regulation No. 10/2011/EC with amendments, relating to materials and articles intended for food contact, unless otherwise stated. In accordance to EU legislation, it is the responsibility of the customer to ensure that the supplied product is suitable for the intended use.

Toppac - Metervej 2 - DK-8940 Randers SV

[www.toppac.dk](http://www.toppac.dk)

All specifications are subject to revision without notice

Updated revision: 1 December 2021